

SECTION 5, T.6N., R.1W., S.L.B. & M.

IN OGDEN CITY, NORTH OGDEN CITY, TOWN OF HARRISVILLE & NORTH OGDEN DISTRICT

SCALE 1" = 400'

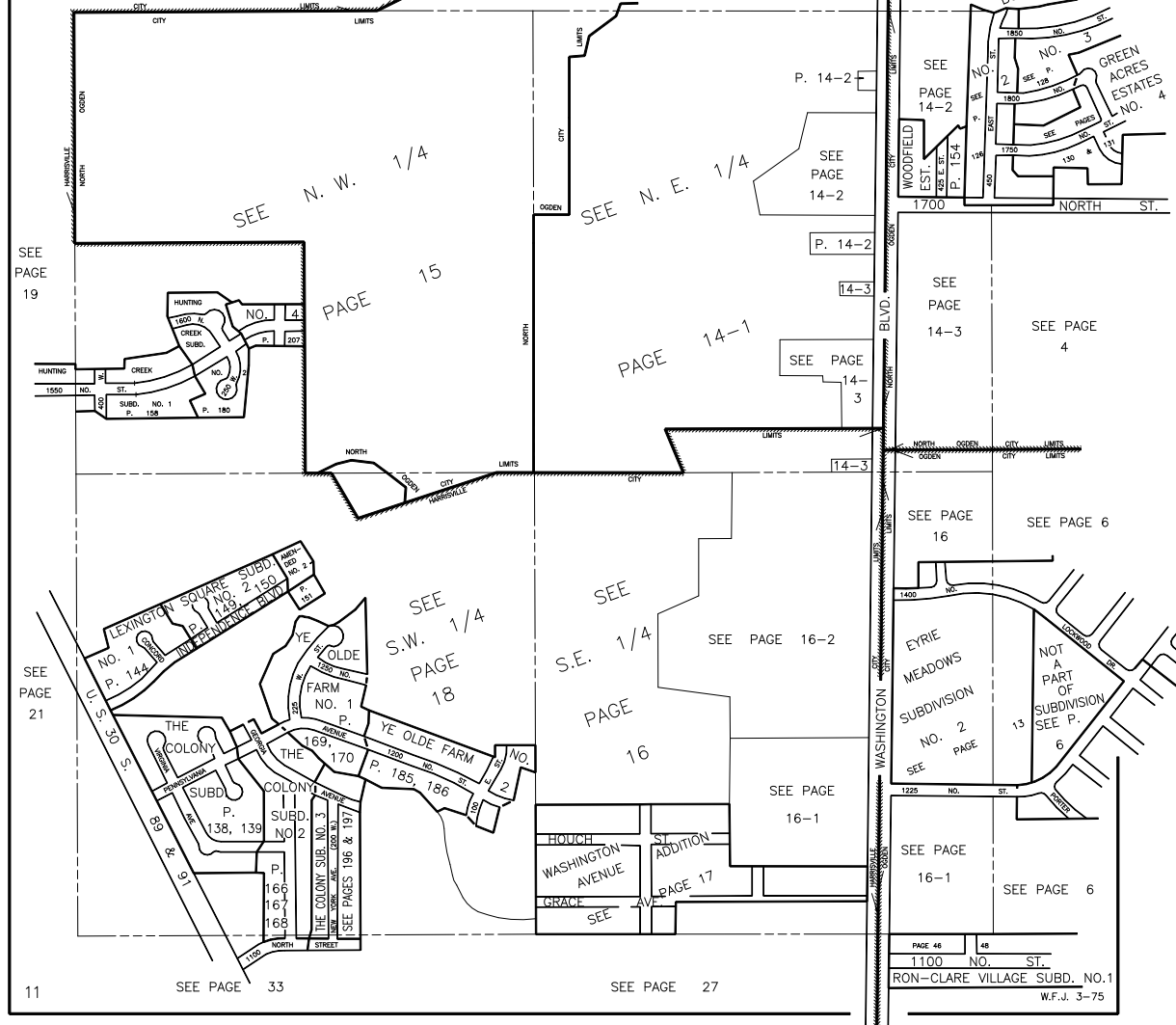
14

PREFIX: 11-014

ALSO SEE PAGES 14-1, 2, 3

SEE BOOK 17, PAGE 67

JILLVILLE SUBD. NO. 1 BOOK 17, PAGE 80



11

SEE PAGE 33

SEE PAGE 27

PAGE 46	48
1100 NO. ST.	
RON-CLARE VILLAGE SUBD. NO. 1	
W.F.J. 3-75	